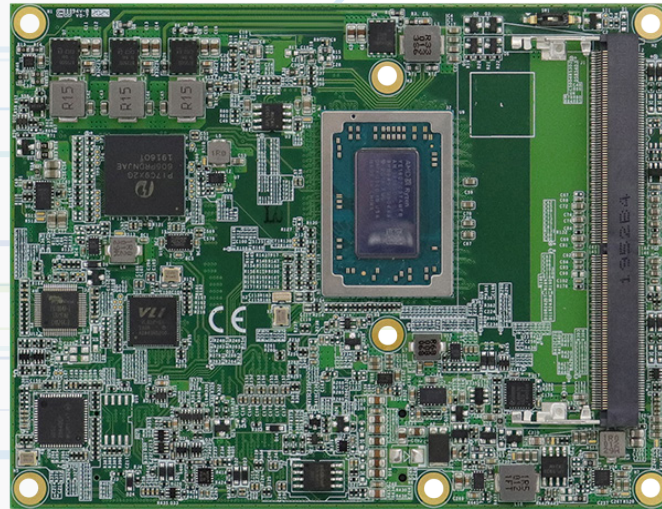


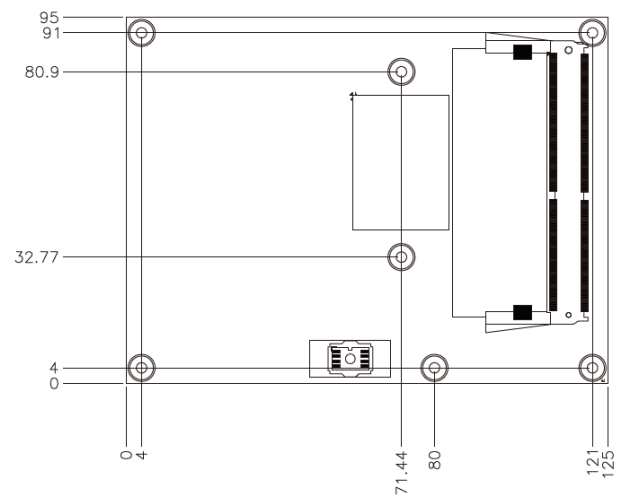
Adbc9502



FEATURES

- AMD Ryzen™ Embedded V1000/R1000
プロセッサ搭載
- 2x DDR4-2400 SO-DIMM、最大 32GB
ECC対応
- HDMI/DVI/DisplayPort/LVDS or eDP
(キャリアボード経由)
トリプルディスプレイ対応
- 4x USB3.1、8x USB 2.0、2x SATAIII
- TPM(2.0)サポート

寸法図



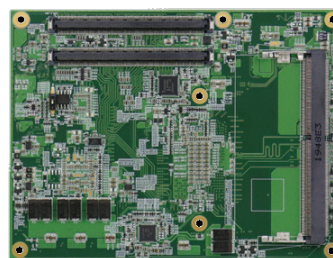
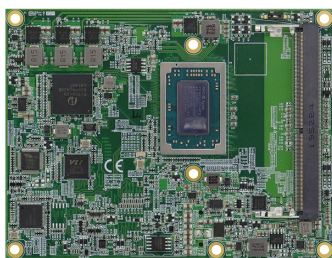
Specifications

仕様

CPU	Onboard AMD Ryzen™ Embedded V1000 / R1000
Memory Types	2x DDR4 SO-DIMM, Max. 32GB
BIOS	AMI
Watchdog Timer	256 levels
H/W Monitor	Yes
Expansion slots	V1000: 1x PEG(8x)(Gen3), 4x PCI-E(1x)(Gen3), 2x PCI-E(1x) R1000: 1x PEG(4x)(Gen3), 3x PCI-E(1x)(Gen3), 3x PCI-E(1x)
Graphics Controller	AMD Radeon™ Vega GPU integrated
Video Output	V1000: 3x DDI R1000: 2x DDI 1x LVDS or 1x eDP (By option)
Ethernet	Intel® I211A PCI-E Gigabit LAN
I/O Chip	Fintek F81804U-I
Serial Port	2x UART (Tx/Rx only)
USB 2.0	8x USB2.0 ports [USB 2.0 Hub x 3ports]
USB 3.0/ 3.1	1x USB3.1 port (10G), 3x USB3.1ports
Serial ATA	2x SATA III via carrier board
Audio	AMD Ryzen™ built-in HD audio controller
TPM	TPM (2.0)
Others	Digital I/O (4-in/4-out)
Dimensions (L x W)	125mm x 95mm
Power Consumption	TBD
Operating Temperature	0°C~60°C
Storage Temperature	-20°C~80°C
Relative Humidity	90% (non-condensing @60)

オーダー情報

Adbc9502-1807LV	COM Express (Type 6) CPU Module with AMD Ryzen™ V1807B QC APU (3.8GHz), DDR4 dual-channel memory, supports LVDS
Adbc9502-1605	COM Express (Type 6) CPU Module with AMD Ryzen™ V1605B QC APU (3.6GHz), DDR4 dual-channel memory, supports eDP
Adbc9502-1605LV	COM Express (Type 6) CPU Module with AMD Ryzen™ V1605B QC APU (3.6GHz), DDR4 dual-channel memory, supports LVDS
Adbc9502-1606LV	COM Express (Type 6) CPU Module with AMD Ryzen™ R1606G DC APU (3.5GHz), DDR4 dual-channel memory, supports LVDS

お問い合わせメール: sales@advanet.jp

※仕様は予告なく変更されることがあります。